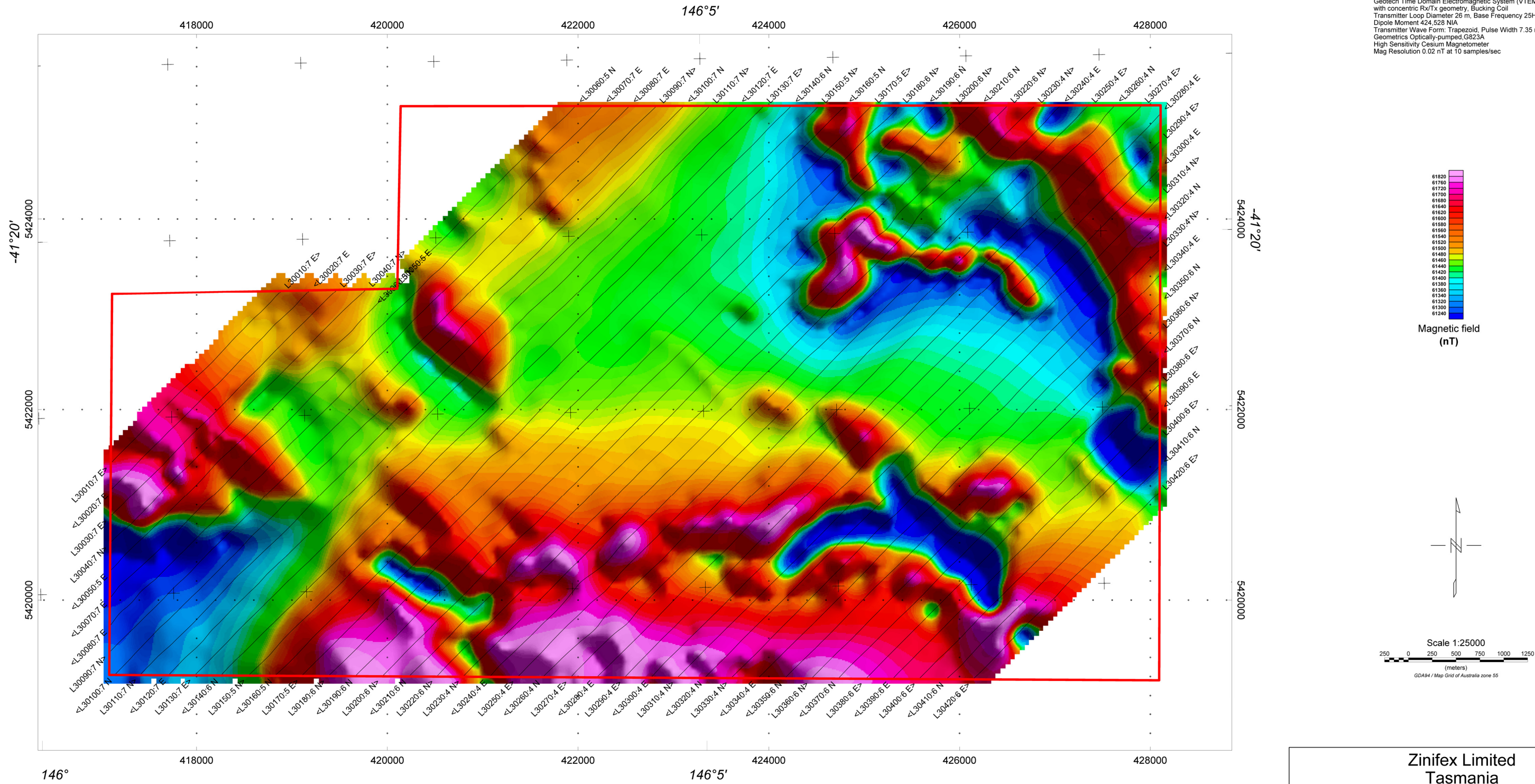


Survey Specifications:  
Aircraft: AS350 B3 helicopter, Registration VH-IPW  
Flight Line Spacing: 200 metres  
Nominal terrain clearance 80 metres  
EM Loop is 42 metres beneath helicopter  
Magnetic sensor is 10.6 metres beneath helicopter

Instruments:  
Geotech Time Domain Electromagnetic System (VTEM 12)  
with concentric Rx/Tx geometry, Bucking Coil  
Transmitter Loop Diameter 26 m, Base Frequency 25Hz  
Dipole Moment 424,528 N/A  
Transmitter Wave Form: Trapezoid, Pulse Width 7.35 ms  
Geometrics Optically-pumped, G823A  
High Sensitivity Cesium Magnetometer  
Mag Resolution 0.02 nT at 10 samples/sec



Zinifex Limited  
Tasmania  
Block 3

Geotech VTEM System  
Total Field Magnetics

Flown and processed by Geotech Airborne Pty Ltd.  
Unit 1, 29 Mulgool Road, Malaga  
Western Australia, 6090  
www.geotechairborne.com

March-April 2008

August 2008